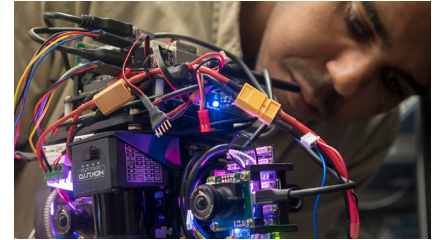
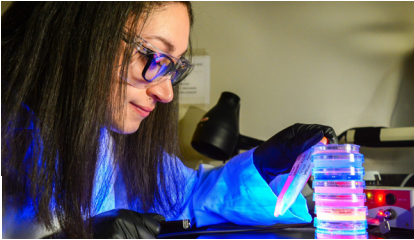




# U.S. ARMY MATERIEL COMMAND

## RESEARCH, DEVELOPMENT AND ENGINEERING COMMAND



### PRIMARY LOCATIONS

- Headquarters  
Aberdeen Proving Ground, Maryland
- Adelphi, Maryland
- Natick, Massachusetts
- Picatinny, New Jersey
- Redstone Arsenal, Alabama
- Warren, Michigan

### CORE COMPETENCIES

- Fundamental and Applied Research
- Technology Development and Engineering
- Technology-enabled Capability Demonstrations
- Enterprise Efficiencies
- External Engagement and Support

*Note: RDECOM is working specified tasks from AMC in preparation of its transition to Army Futures Command. All RDECOM entities will move to the new four-star command, headquartered in Austin, Texas, in FY19.*

**R**esearch, Development and Engineering Command (RDECOM) has more than 12,000 scientists, engineers and other professionals working worldwide on a strategic portfolio that balances near- and mid-term modernization with the development of technologies that will become the capabilities the Army needs to maintain decisive overmatch.

The command maintains more than 500 active domestic and international partnerships within a global science and technology network, including agreements with domestic and international academic institutions, small business, industry and other government agencies. These relationships, combined with its workforce, give the command the reach, position, scale and technical expertise to ensure decisive capabilities for today's Soldiers and the future Army, as well as foundational capabilities for the Joint Warfighter. They also allow RDECOM to partner closely with the requirements community of the Training and Doctrine Command, which defines future Army needs, and the Assistant Secretary of the Army (Acquisition, Logistics and Technology) Program Manager community, which brings those capabilities to the field.

RDECOM leads in the development of the technologies needed for modernization by performing research, development and engineering too risky or too Army-specific for industry or academia. The organization's technological expertise, systems engineering discipline, analytical capabilities and collaborative reach give the Army an organic research and development capability on the cutting-edge of technology across the full spectrum of operations. The command's tight integration with the Army and deep understanding of Soldier needs gives it unmatched insight into capability development. RDECOM's core functions include delivering technological expertise, systems engineering discipline, analytical capabilities and collaborative reach, as well as delivering organic concepts and requirements-driven research, development and engineering capabilities.

RDECOM oversees six research, development and engineering centers and two Army Research Laboratory locations, which act as focal points for integrating and accelerating innovative technologies. RDECOM also oversees the RDECOM Forward Element Commands, organizations that seek state-of-the-art science and technology solutions and work to develop security cooperation through international collaboration.

